

### Features

- Can be placed in a tube for damping the acoustical output of a receiver
- ABS housing
- Housing Color identifies the acoustic resistance
- Hydrophobic mesh – water repellent
- Rounded corners assures easy mounting in tube
- Black screen color for easy inspection



### Contents

	<b>Page</b>
History Revision .....	2
Mechanical Specifications.....	3
Acoustical Specifications.....	3
Material Specifications.....	3
Environmental Conditions .....	3
Mechanical Dimensions .....	4
Packaging.....	4
Product Specification Form.....	5

Sonion reserves the right to make changes at any time to improve reliability, function or design, in order to provide the best product possible.

### History Revision

Revision Number/Date	Change from last revision
01 / May 06	1 <sup>st</sup> revision.
02 / Sep 06	Dimensions corrected. Allowed forces corrected. Item numbers added.
03 / Oct 06	Allowed forces corrected.
04 / Mar 07	Acoustic resistance tolerance changed to 25 %
05 / Mar 07	Material changed from PP to ABS. Durability increased to 6 N. SSD 03 added.
06 / May 07	SSD 04, SSD 05, SSD 06, and SSD 07 added.

### Mechanical Specifications

Durability:

- Allowed radial force ..... Max. 6 N
- Allowed axial force ..... Max. 25 N

### Acoustical Specifications

Type	Colour	Acoustic Resistance			Unit, Rac	Item number
		Min.	Nom.	Max.		
SSD 01	White	510	680	850	Ohm	9910-3013392
SSD 02	Green	1125	1500	1875	Ohm	9910-3013393
SSD 03	Red	1650	2200	2750	Ohm	9910-3015351
SSD 04	Grey	240	320	400	Ohm	9910-3015657
SSD 05	Brown	750	1000	1250	Ohm	9910-3015658
SSD 06	Orange	2475	3300	4125	Ohm	9910-3015659
SSD 07	Yellow	3525	4700	5875	Ohm	9910-3015660

Other resistances available upon request

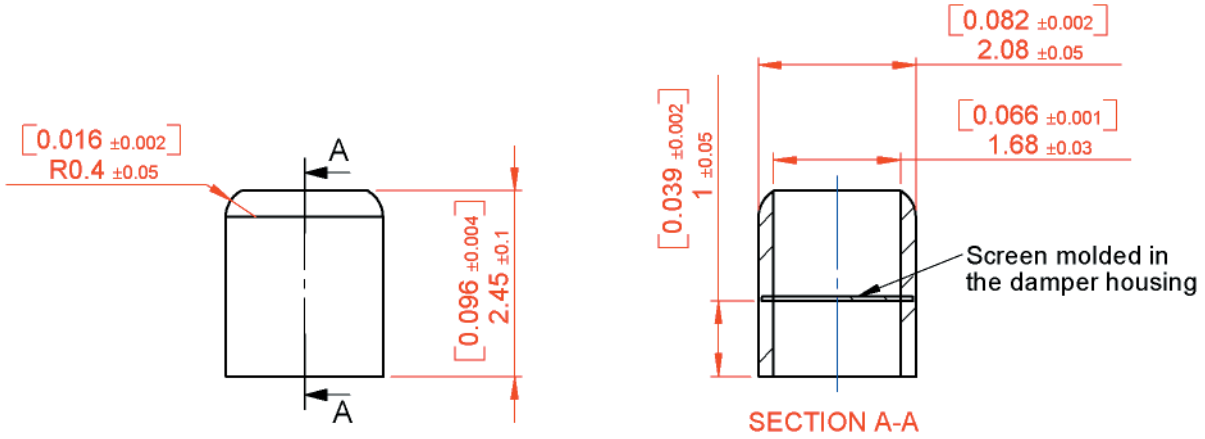
### Material Specifications

- Housing ..... ABS
- Screen ..... PE, black

### Environmental Conditions

- Storage temperature..... -40 to + 60°
- Storage humidity..... 10 to 95% RH
- Operational temperature ..... -25 to +55°C
- Operational humidity..... 10 to 95% RH

### Mechanical Dimensions



**Note:**

The standard measurement tolerance on the drawings is  $\pm 0.05$  mm/[0.002"]. Tolerances which differ from this value will be indicated on the drawings.

### Packaging

Packaging.....	Bulk
Box dimension (l*w*h).....	117 mm*105 mm*13 mm
Pieces per box.....	100, -0%, +5%

### Product Specification Form

Name: \_\_\_\_\_

Company: \_\_\_\_\_

Customer Part No.: \_\_\_\_\_

Parameters	Look at Page	Enter your choices	Guidelines
Model	3		SSD 01, SSD 02, SSD 03, SSD 04, SSD 05, SSD 06, or SSD 07