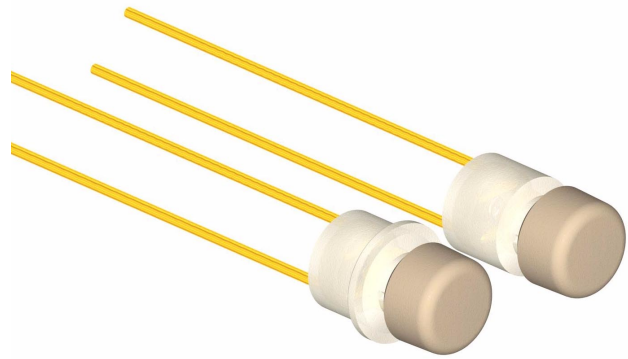


Features

- Very small dimensions, Ø 1.9 mm [0.075"]
- With or without flange
- Different plastic colors available
- Different lead wire lengths available



Contents

	Page
History Revision	2
Mechanical Data	3
Electrical Data	3
Materials Data	3
Recommended Process Parameters	3
Operational Conditions	4
Electrical Function	5
Mechanical Dimensions	5
Housing Styles	5
Knob Style	6
Knob Colors	6
Lead Wires	7
Product Specification Form	8

Sonion reserves the right to make changes at any time to improve reliability, function or design, in order to provide the best product possible.

History Revision

Revision Number/Date	Change from last revision
02 / Oct. 02	History Revision added. Color choices for housing styles added.

Mechanical Data

Switch force	Min. 35 cN, Max. 60 cN
Stability of mechanical dimensions	Max. 2% change after MRT
Retention force of knob	Min. 10 N

Electrical Data

Switch contact resistance	Max. 150 mΩ
Switch contact insulation	Min. 1 MΩ

Materials Data

Solder terminals	Solid silver. Gold flash plated
Housing	PA 6.6
Knob	POM
Base parts	PEEK

Recommended Process Parameters

Mounting and gluing:

Recommended types of glue	Cyanoacrylate (non-blooming), i.e. Loctite 401, 408, 460 and Sicomet 50, 63, 77
-------------------------------------	---

Soldering:

Temperature and time	260°C [500°F] for max. 3 s or 315° [600°F] for 1 s Mechanical stress on soldering terminals must be avoided during soldering
Distance from bottom	Min. 0.5 mm / 0.02"
Bending of soldering terminals:	Min. 3 bending cycles 90°, min. 0.5 mm/[0.02"] from bottom

Cleaning:

Recommended cleaning solvents Aqua Wash (Alpha 2110), Benzine
 Ammonia, 10% solution with demineralized water
Ultrasonic cleaning must be avoided

Operational Conditions

Temperature and Humidity:

Storage temperature -40 to +60°C
 Operational temperature conditions -25 to +55°C
 Operational humidity conditions 10 to 95% RH

Mechanical load:

Durability of switch button:

- Allowed force to be applied continuously in operational direction (normal use) Max. 500 cN
- Allowed force to be applied for max. 20 cycles in operational direction Max. 2,000 cN
- Allowed force to be applied for max. 20 cycles in a 45° angle to switch button Max. 500 cN
- Allowed force to be applied for max. 20 cycles perpendicular to switch button Max. 500 cN

Durability of solder terminals: Min. 400 cN pull strength, Min. 3 bending cycles 90°
 - After MRT test Min. 400 cN pull strength

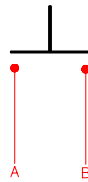
Electrical load:

Maximum switching current 10 mA
 Maximum continuous current 100 mA

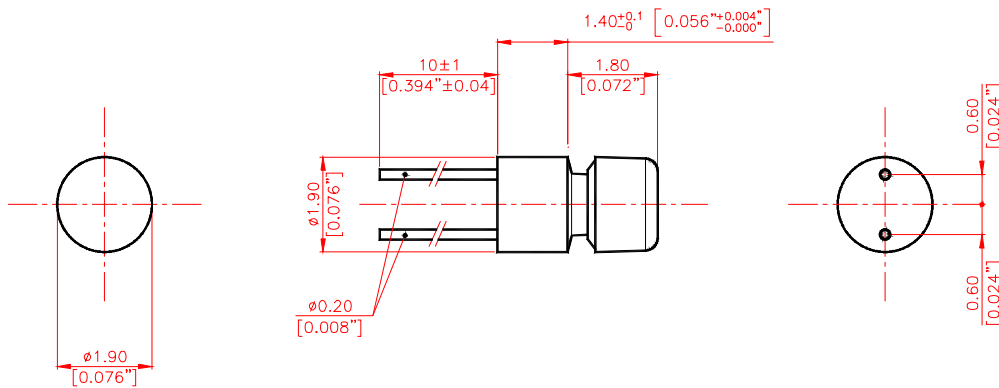
Operational lifetime:

Switch contact Min. 100,000 cycles

Electrical Function



Mechanical Dimensions

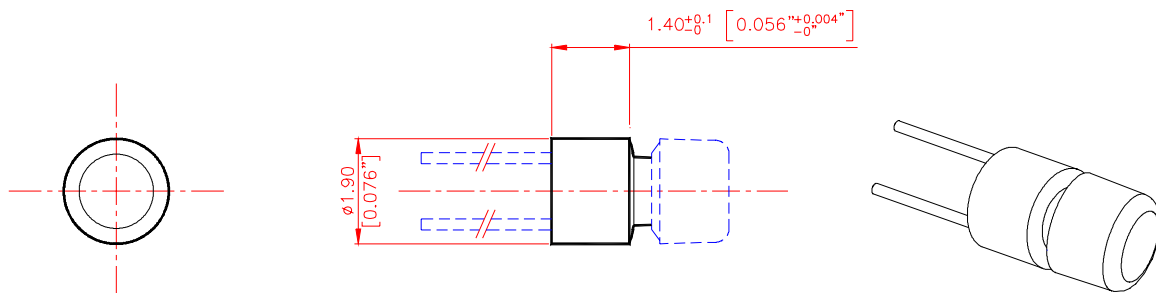


Note:

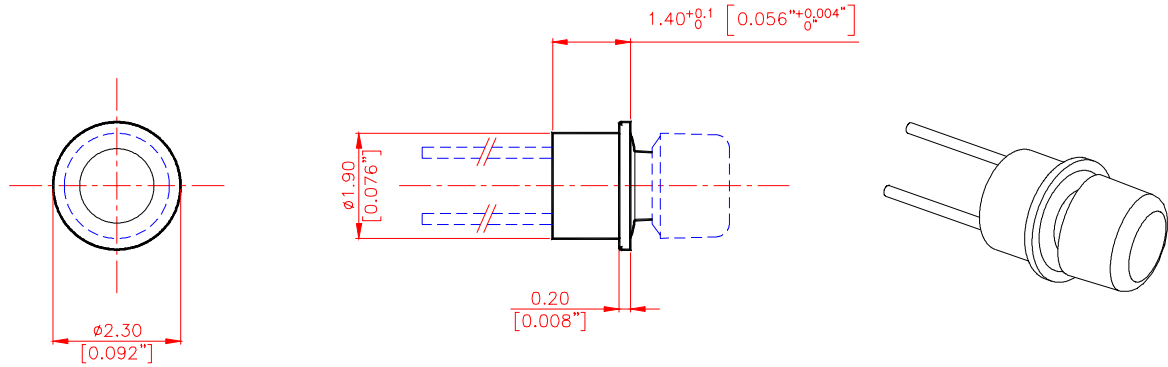
The standard measurement tolerance on the drawings is ± 0.05 mm/[0.002"]. Tolerances which differ from this value will be indicated on the drawings.

Housing Styles

No. 01

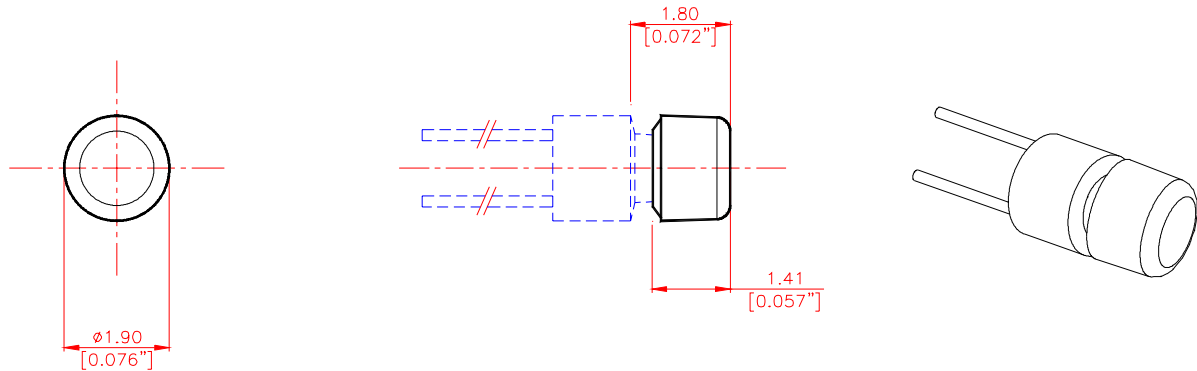


No. 02



Knob Style

No. 01

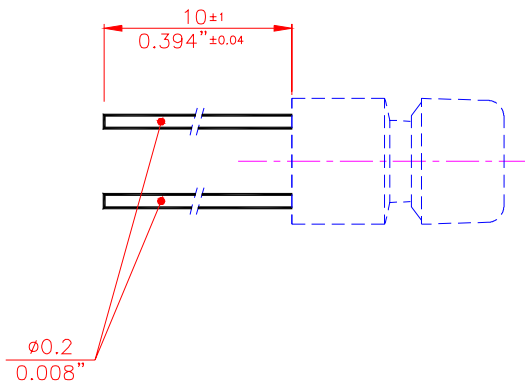


Knob Colors

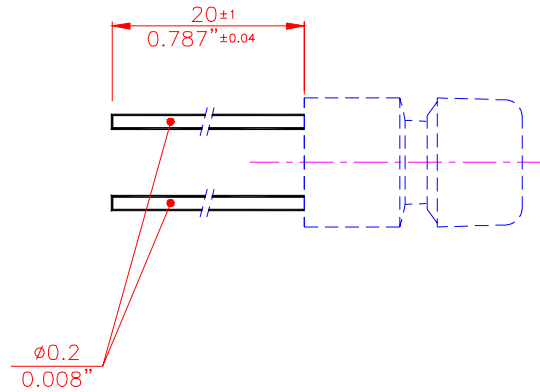
Please refer to the series 500 included in the Sonion binder for plastic colors.

Lead Wires

10 mm



20 mm



Name: _____

Company: _____

Customer Part No.: _____

Parameter	Page	Requested	Remarks
Model	1	PB 100	
Housing Styles	5		Please enter no. 01 or 02
Housing Colors			Housing Style no. 01 available in color no. 100 Housing Style no. 02 available in color nos. 100 and 131
Knob Style	6	No. 01	
Knob Colors	6		Please refer to the series 500 included in the Sonion binder for plastic colors
Lead Wires	7		Please enter lead wire length 10 mm or 20 mm